



Estate Agents
Hurst

South Park Glade South Park Drive,, Gerrards Cross, Bucks, SL9 8JH
Prices From £3,000,000

South Park Glade South Park Drive,, Gerrards Cross, Bucks, SL9 8JH

An exclusive collection, in a private gated development, of just five luxury detached executive homes, all in excess of 4,200 sq ft. Each property offers five bedrooms, five bathrooms, four receptions, as well as an attached double garage with driveway parking. These homes enjoy a protected woodland location and yet are just a half mile walk of Gerrards Cross mainline railway station (20 mins London Marylebone) and only a few minutes walk from the High Street.

Each property in South Park Glade is unique with generously proportioned living areas. Features include; spacious hallways, guest cloakroom, sitting room with fireplace, open-plan bespoke Glhöss kitchen/breakfast/dining room with state-of-the-art appliances, garden room, study/playroom, utility room, principal bedroom suite with dressing room and luxury en-suite, four further double bedrooms all with en-suite facilities. There is air conditioning to key areas on the ground and first floors.

Each individual house has been thoughtfully designed with luxury in mind, with the interior displaying style, quality and craftsmanship in every feature, creating a contemporary living space with a personal touch.

The internal images used in our marketing are of the show home, Fulmer House, which is now open and available to view by appointment only.

The site brochure is available online, see the site brochure link.

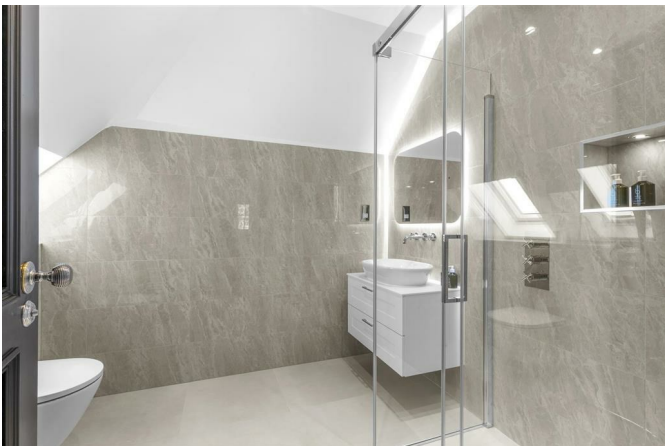
The Property Misdescriptions Acts 1991 and The Estate Agents Act 1979 - Hurst Estate Agents LLP have not tested any apparatus, equipment, fixture and fittings or services and cannot verify that they are in working order or fit for the purpose. A buyer is advised to obtain verification from their Solicitor or Surveyor. References to the Tenure of the property are based on information supplied by the seller. Hurst Estate Agents LLP has not had sight of the title documents. A buyer is advised to obtain verification from the Solicitor. There is a connected person between the vendor company and the agent.



- LUXURY, SPACIOUS LIVING AREAS
- BESPOKE GLHÖSS DESIGNER KITCHENS
- HIGH QUALITY APPLIANCES INCLUDED
 - SONOS SURROUND SOUND SYSTEM
 - FIVE DOUBLE EN-SUITE BEDROOMS
- UNDERFLOOR HEATING TO 1ST & 2ND FLOORS
 - AIR CONDITIONING TO KEY AREAS
- DOUBLE GARAGE & DRIVEWAY PARKING
- QUIET, PROTECTED WOODLAND SETTING
 - 10 YEAR BUILDER'S WARRANTY

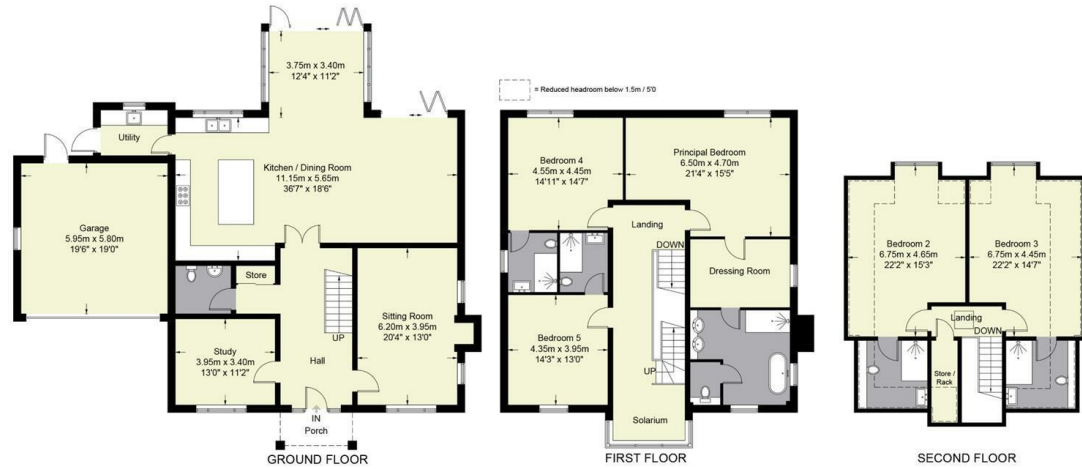






Fulmer House

Approximate Gross Internal Area
 Ground Floor = 1577 sq ft / 146.5 sq m
 First Floor = 1404 sq ft / 130.5 sq m
 Second Floor = 918 sq ft / 85.3 sq m
 Garage = 373 sq ft / 34.7 sq m
 Total = 4272 sq ft / 397.0 sq m



Floor Plan produced for Hursts by Media Arcade ©.

Illustration for identification purposes only. Window and door openings are approximate. Whilst every attempt is made to assure accuracy in the preparation of this plan, please check all dimensions, shapes and compass bearings before making any decisions reliant upon them.



The Property Misdescriptions Acts 1991. Hurst Estate Agents have not tested any apparatus, equipment, fixture and fittings or services and cannot verify that they are in working order or fit for the purpose. A buyer is advised to obtain verification from their solicitor or surveyor. References to the tenure of the property are based on information supplied by the seller. Hurst Estate Agents has not had sight of the title documents. A buyer is advised to obtain verification from their solicitor.